

IRT Analyzer 4.8™

Thermographic Organizer Analyzer Reporter

A high-quality documentation of your accomplished work is necessary in many areas. Last but not least when it comes to the use of an infrared camera in predictive maintenance, building inspections and research & development.

Seeing a problem with an infrared camera is one thing - in most of the cases you will need to qualify, quantify and document your IR inspection results to determine both the seriousness of the detected problems and the appropriate corrective action.

This is exactly the purpose IRT Analyzer® was developed for. IRT Analyzer® is a complete thermal analysis software suite with powerful built-in measurement and analysis functions. IR-Image, corresponding visual image, analysis functions / results, voice and written comments (annotations) are easily linked together.

Create fast and comprehensive high quality reports of your daily work with one mouse click, using customized layout templates to match your needs. IRT Analyzer® makes it possible for you to spend more time in the field and less time at the desk - a priceless advantage for all service technicians!

The clearly structured and easy-to-use user interface of IRT Analyzer® allows intuitive usage of the software and reduces training needs and costs. Even if you use IRT Analyzer® only occasionally you will be able to produce complex, meaningful and comprehensive analysis and reports of your work with a minimum time effort.

IRT Analyzer® offers a wide range of high-quality and powerful analysis tools like multiple measurement



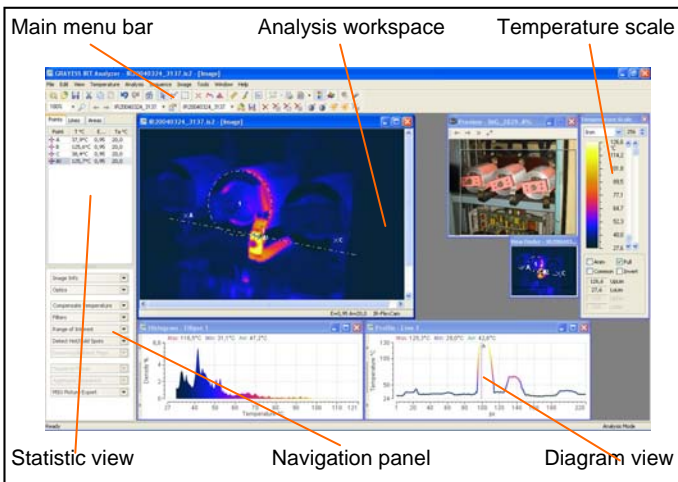
points, multiple profile lines, area analysis, automatic Hot Spot detection, multi point trend, box-line trend, area trend, isotherms, envelope profiles, region-of-interest statistics and many more. All analysis tools allow independent emissivity correction for regions or the complete image. Extended analysis tools like image fusion, image subtraction, image composition and image and sequence export (JPEG, Bitmaps, AVI clips) are as well included.

Modern infrared cameras can record thousands of infrared images in a very short time, on memory cards or directly on the PC via Ethernet, USB or IEEE-1394 interface. IRT Analyzer® is equipped to handle this amount of data in a quick and easy way.

IRT Analyzer® is a Windows®-based software, generating reports in Microsoft Word format - the industry standard word processing platform. This makes it very easy to share reports with colleagues and customers.

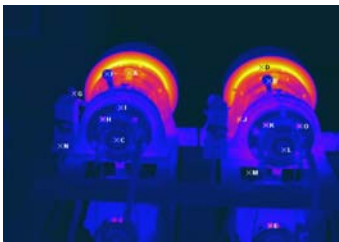
IRT Analyzer® supports a large number of infrared image formats. It is the first analysis software that is independent of camera manufacturers. It is compatible with most of the modern infrared cameras as well as with many older models. Contact us for details.

IRT Analyzer® is a unique and highly sophisticated tool for organization of infrared images, their evaluation and the generation of significant reports. All functions needed for image management, analysis and report generation are combined in one piece of software.



IRT Analyzer 4.8™

Thermographic Organizer Analyzer Reporter



Punkt	T °C	Emis.	Tu °C
A	76,9	0,97	29,8
B	37,2	0,97	29,8
C	34,4	0,97	29,8
D	100,3	0,97	29,8
E	57,7	0,97	29,8
F	35,9	0,97	29,8
G	54,8	0,97	29,8
H	47,5	0,97	29,8
I	40,6	0,97	29,8
J	65,0	0,97	29,8
K	47,9	0,97	29,8
L	36,1	0,97	29,8
M	26,1	0,97	29,8
N	34,5	0,97	29,8
O	49,3	0,97	29,8

Multiple Measurement Points - Place an unlimited number of measurement points on the image. It is possible to change the emissivity value for each point separately



Hot/Cold Spots

Anzeigen lokaler Extreme (Hot/Cold Spots) innerhalb des aktiven Temperaturbereiches.

Anzeige der Hot Spots

Anzeige der Cold Spots

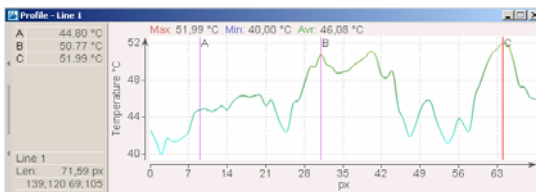
Spot-Anzahl:

Größe der Spot-Umgebung:

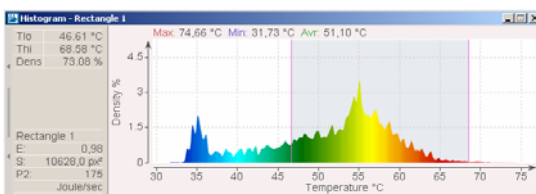
Automatische Anpassung

Übernehmen

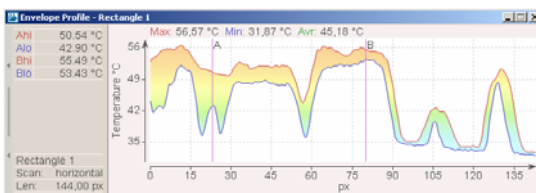
Hot Spots/Cold Spots - Automatically detect Hot/Cold spots on the image. You can define the number of spots displayed and the size of the spot neighborhood



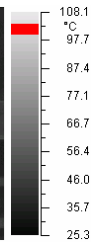
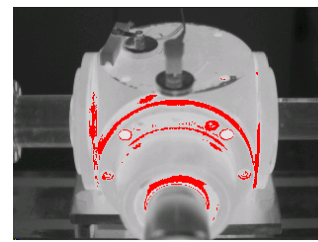
Profile - A profile shows temperature values along a defined line



Histogram - A histogram displays the temperature distribution in a selected area. It indicates also the max. min. and medium value of temperatures in the selected area



Envelope Profile - An envelope profile displays min and max temperature for every vertical or horizontal line of a rectangular area



Isolines - Mark a specified temperature range with a single colour. Choose between *single* or *multi* isolines

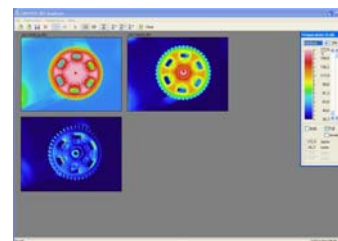


Image Subtraction - Subtract two images to obtain a new image representing the temperature difference. The image can be saved for later analysis

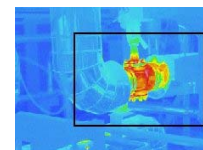
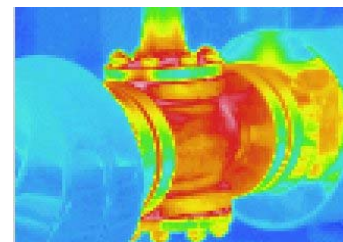
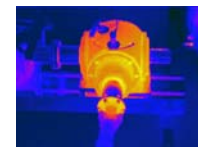
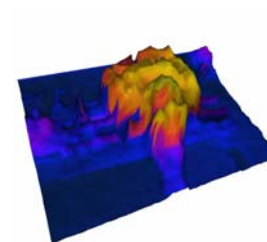
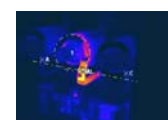
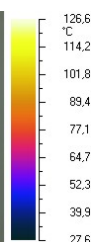


Image Zoom - Adjust image zoom from 50 to 5000% of the original size. The view finder window helps to located the displayed part of the image



3D view - A thermal image can be visualized in 3D view for a better presentation of temperatures.



Fusion view - Image fusion allows to blend infrared and visual image together to one, making evaluation of thermal problems even easier